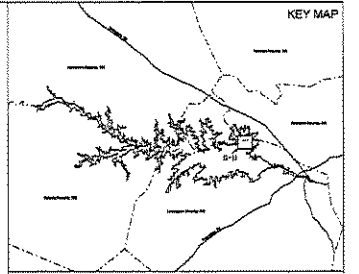
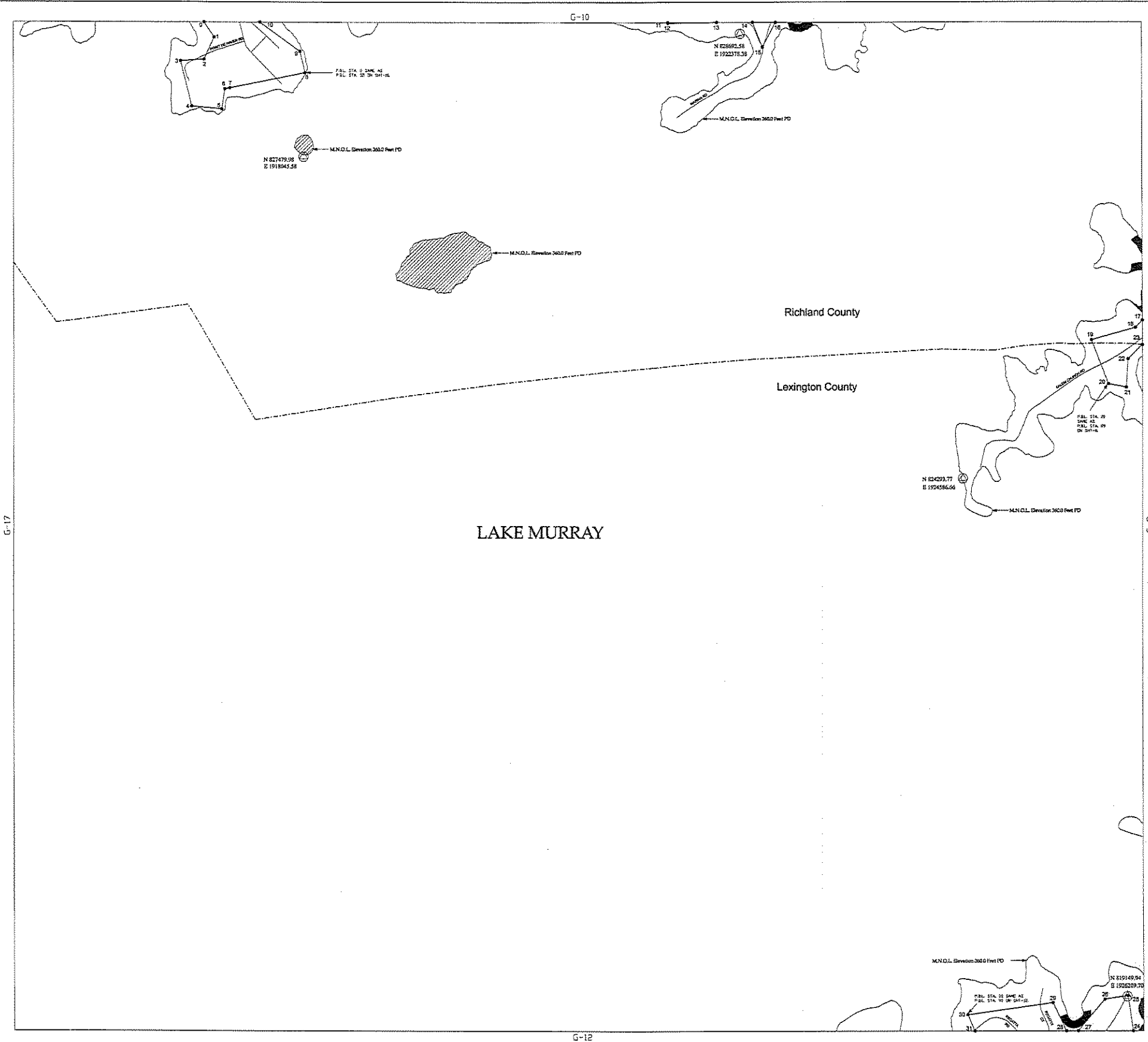


Project Boundary Line Traverse

From - To	Bearing	Distance
0-1	S 34°00' E	180'
1-2	S 25°00' W	240'
2-3	S 86°00' W	235'
3-4	S 14°00' E	460'
4-5	S 85°00' E	300'
5-6	N 09°00' E	200'
6-7	N 78°30' E	50'
7-8	N 78°30' E	760'
8-9	N 13°15' W	215'
9-10	N 54°00' W	488'
11-12	S 05°00' E	8.52'
12-13	N 89°00' E	487'
14-15	S 21°52' E	264'
15-16	N 28°00' E	278'
17-18	S 43°30' W	100'
18-19	S 74°15' W	454'
19-20	N 21°20' W	467'
20-21	S 78°45' E	180'
21-22	N 03°26' E	281'
22-23	N 45°00' E	200'
24-25	N 08°00' W	356'
25-26	S 81°45' W	231'
26-27	S 40°00' W	417'
28-29	N 25°00' W	313'
29-30	S 81°45' W	850'
30-31	S 22°30' E	175'



LEGEND

- Railroads
- Pipeline
- Transmission line
- Road
- Project Boundary Line
- Maximum Normal Operating Level (M.N.O.L.)
- Stream
- County Boundary
- Property owned in Fee by S.C.E. & G.
- ▨ Recreation areas owned in Fee by S.C.E. & G.

HORIZONTAL DATUM BASED ON THE SOUTH CAROLINA STATE PLANE COORDINATE SYSTEM NAD83/2011 (INTERNATIONAL FOOT).

VERTICAL DATUM BASED ON NAVD83 (FEET).

TO CONVERT FROM S.C.E. & G. PLANT DATUM (PD) TO NAVD 83 ADD -21.9'. THE PROJECT BOUNDARY HEIGHT IS DERIVED BASED ON S.C.E. & G. SURVEYS AND RECORDED SURVEYS AND DEEDS OF RECORD UNLESS OTHERWISE NOTED. ALL AREAS OF THE PROJECT BOUNDARY THAT ARE RECREATION AREAS WERE PROVIDED BY S.C.E. & G. AND MAPPED BY CH2M, INC.

INTERPOLATION PROCESS IN ACCORDANCE WITH NATIONAL MAP ACTUARY STANDARDS. AERIAL PHOTOGRAPHY WAS PLANNED AT A SCALE APPROXIMATELY 1:2500 = 600 FEET.

I, GERRARD HERRICK, A PROFESSIONAL SOUTH CAROLINA PHOTOGRAMMETRIC SURVEYOR/HANDS HAVE REVIEWED THE LAKE MURRAY PROJECT MAPS. THE PLANIMETRIC AND CONTOUR LINES ON SAID MAPS ARE IN ACCORDANCE WITH THE NATIONAL MAP ACTUARY STANDARDS FOR THE SCALE OF 1"=100' AND WERE PRODUCED USING PHOTOGRAMMETRIC METHODS UNDER MY DIRECT SUPERVISION. SAID WORK IS BASED ON NAD83/2011 SOUTH CAROLINA STATE PLANE COORDINATE SYSTEM (INTERNATIONAL FOOT) AND THE VERTICAL DATUM IS NAVD83 (FEET).

THIS DOCUMENT WAS ORIGINALLY ISSUED AND SEALED BY GERRARD HERRICK, L-24635, ON JULY 2, 2008. THIS MAP SHALL NOT BE CONSIDERED A CERTIFIED DOCUMENT.

I, GARY BAYON, A PROFESSIONAL LAND SURVEYOR IN THE STATE OF SOUTH CAROLINA, S.L.S. 13163, HAVE REVIEWED THIS PORTION OF THE LAKE MURRAY PROJECT BOUNDARY SHOWN HEREIN. THE BOUNDARY SETBACK DIMS IN THE DIMS ON POSSESSORS PLACED EASEMENTS OVER THE LANDS SHOWN ON THIS MAP THAT ARE INSIDE THE PROJECT BOUNDARY. THE PROJECT BOUNDARY LINED SHOWN ARE NOT CORRECT LINES WERE BASED ON S.C.E. & G. SURVEYS AND RECORDED SURVEYS AND DEEDS OF RECORD.



EXHIBIT G SHEET G-11

DETAIL MAP OF PROJECT AREA
SHEET 11 OF 77
SALUDA HYDROELECTRIC PROJECT NO. S16
SOUTH CAROLINA ELECTRIC & GAS COMPANY

SCALE: 1 INCH = 400 FEET

0 400 800 1,600
FEET

DATE: AUGUST 2008

G-17

G-12